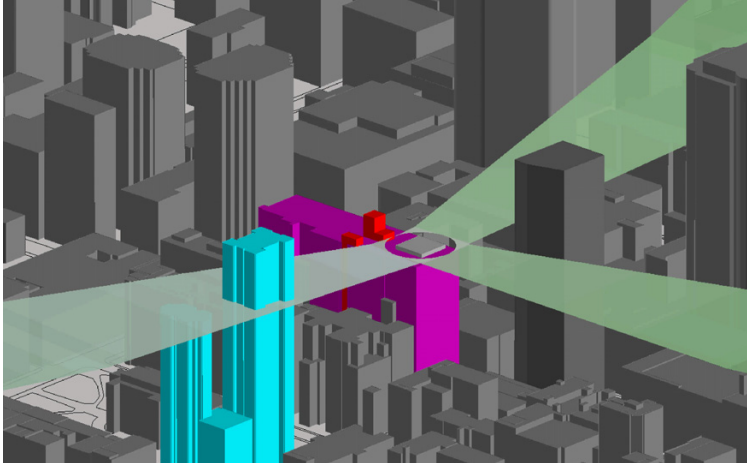




PRYDE SCHROPP McCOMB INC.

FEATURE PROJECT PROFILE

St. Michael's Hospital Heliport Assessment



The intent of this aeronautical study was to develop mitigations to reduce the impact of a proposed high rise residential development on the approaches to the new St. Michael's Heliport.

Through 2D and 3D aeronautical technical analysis, recommendations that would permit the development to occur and not significantly impact operations at the new heliport were developed.

The process involved first a site visit and GPS survey that was used to augment 3D data which was obtained from a third party. The GPS data, 3D building footprints and architect's plans were then integrated into a Geographic Information System (GIS). Potential obstacles and violations were then identified. Finally, a series of alternative approaches were developed and analyzed to ensure they met certification requirements.

Through sophisticated technical analysis and an in-depth understanding of certification criteria, PSMI was able to provide a mitigation that maximized the development potential of the site without compromising heliport operations. This resulted in a win-win situation for both the developer and the heliport operator.

PROJECT LOCATION

Toronto, Ontario, Canada

PROJECT TYPE

Planning & Regulatory

CLIENT TYPE

Institutional

CLIENT NAME

St. Michael's Hospital

PROJECT DURATION

2003

PROJECT VALUE

\$1.5 million

PSMI CONTACT

Bernhard Schropp, P.Eng.
Vice President

T: 519.389.4343x230

Email: info@psmi.ca

© Pryde Schropp McComb Inc. 2009. All Rights Reserved.

For more information contact Pryde Schropp McComb, Inc.
www.psmi.ca | 519-389-4343 | info@psmi.ca