

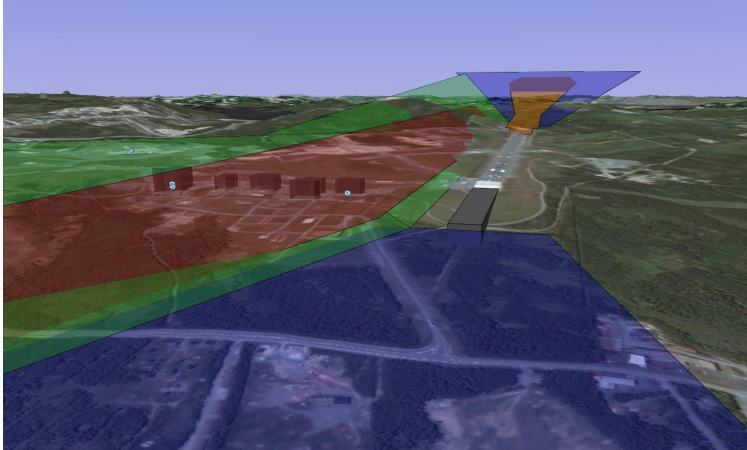


PRYDE SCHROPP McCOMB INC.

# FEATURE PROJECT PROFILE

## St. John's International Airport

### Runway 11-29 Extension Assessment



Pryde Schropp McComb Inc. (PSMI) provided specialty airport planning consulting services to the St. John's International Airport Authority (SJIAA) who had identified an interest in developing a better technical understanding of extending Runway 11-29 by 1,500 ft. (457.2 m). The study considered a number of criteria including international practices for engine out performance (EOP) restrictions. This was particularly important given the undulating terrain off both ends of the runway.

The study also identified aircraft operating limitations and great circle ranges for a variety of aircraft types given the extend runway scenarios. Both the east and west ends of the runway were evaluated for obstacle limitation surfaces, ATC sight lines, EOP, RESA and other airfield ground lighting and navigational aid considerations. The study presented for the most suitable configuration which included reserves for future runway end safety areas (RESA).

#### PROJECT LOCATION

St. John's, NL, Canada

#### PROJECT TYPE

Planning & Regulatory

#### CLIENT TYPE

Airport Authority

#### CLIENT NAME

St. John's International Airport Authority

#### PROJECT DURATION

2007

#### PROJECT VALUE

\$20-25 million

#### PSMI CONTACT

Bernhard Schropp, P.Eng.  
Vice President

T: 519.389.4343x230

Email: [info@psmi.ca](mailto:info@psmi.ca)